



# DZR Firmware Updater User's Guide

## Introduction

Thank you for choosing this Yamaha product.

This User's Guide explains how to use the "DZR Firmware Updater" application to update the firmware of the DZR series and DXS-XLF series (only Dante-supported models).

## Precautions (Read First)

- Performing updates is at the user's own risk.
- Note that the device may be damaged if it is not operated according to the procedures described in this User's Guide, such as turning off the device or disconnecting the cable while the update is in progress (loading data).
- If the update fails or the device does not operate correctly even after the update has been attempted again, contact qualified Yamaha service personnel.
- Yamaha Corporation owns all copyrights for the device firmware, its update program and the User's Guide.
- Unauthorized duplication or modification of part or all of the firmware, software, and User's Guide is prohibited.
- The screen shots in this User's Guide are for instructional purposes only and may differ from the actual screens.
- Dante is a registered trademark of Audinate Pty. Ltd.
- Windows is a registered trademark of Microsoft Corporation in the United States and other countries.
- All other company and product names mentioned in this document are the trademarks or registered trademarks of their respective companies.

## Step 1. Preparing the hardware and software

1. Prepare the following hardware.

Hardware	Notes
Dante-supported speakers	<ul style="list-style-type: none"><li>• DZR series : DZR315-D, DZR15-D, DZR12-D, DZR10-D</li><li>• DXS series : DXS18XLF-D, DXS15XLF-D</li></ul>
Windows computer	<ul style="list-style-type: none"><li>• OS : Windows 10 (32-bit/64-bit)</li><li>• CPU : 1 GHz or faster processor</li><li>• Memory : 2 GB or more</li><li>• Others : Ethernet (1000BASE-T) is required.</li></ul>
Ethernet cable	<ul style="list-style-type: none"><li>• CAT5e or higher recommended.</li><li>• Either a straight-through or crossover cable can be used.</li></ul>

2. Set up the following software on the prepared computer.

Software	Setup procedure
Application "DZR Firmware Updater"	<ol style="list-style-type: none"><li>1. Download "dzt_firmware_updater.zip" from the Yamaha Pro Audio website, and then extract it.</li><li>2. Save "DZR_Firmware_Updater" to a folder.</li></ol>
Firmware file "DZR_PROG.BIN"	<ol style="list-style-type: none"><li>1. Download "dzt_firm ***.zip" (where "***" is the version number) from the Yamaha Pro Audio website, and then extract it.</li><li>2. Save "DZR_PROG.BIN" to a folder.</li></ol>

### Note

- URL of Yamaha Pro Audio website : <http://www.yamahaproaudio.com/>
- Note that the name of the firmware file after extraction does not include the version number.

## Step 2. Specifying computer TCP/IP setting

1. On the computer, open the "Internet Protocol Version 4 (TCP/IPv4) Properties" dialog box.

### Note

This dialog box can be opened, for example, by clicking the following in the order shown.

[Control Panel]

→ [Network and Internet]

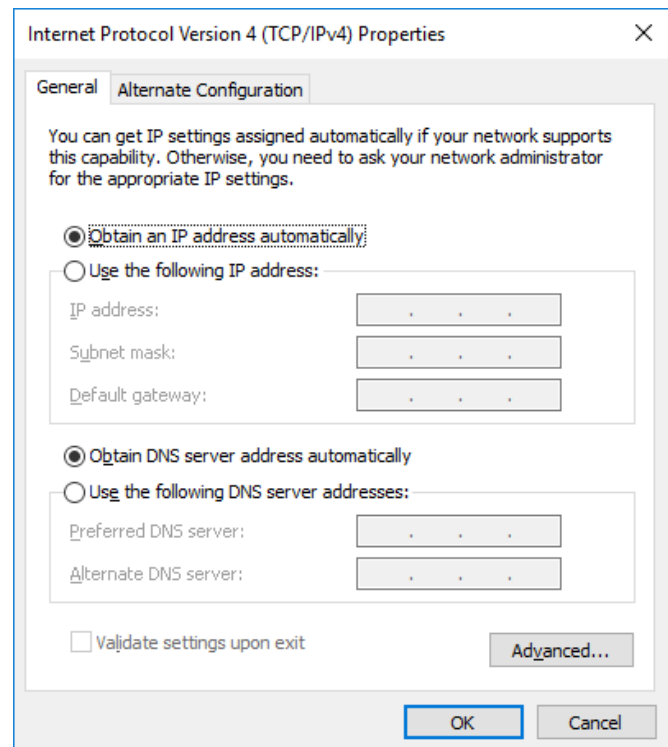
→ [Network and Sharing Center]

→ [Ethernet/Wi-Fi]

→ [Properties]

→ [Internet Protocol Version 4 (TCP/IPv4)]

→ [OK]



From here, the procedure differs depending on the speaker setting.

### 【When speaker IP address setting is DHCP】

2. Select [Obtain an IP address automatically], and then click [OK].

### 【When speaker IP address setting is Unit ID】

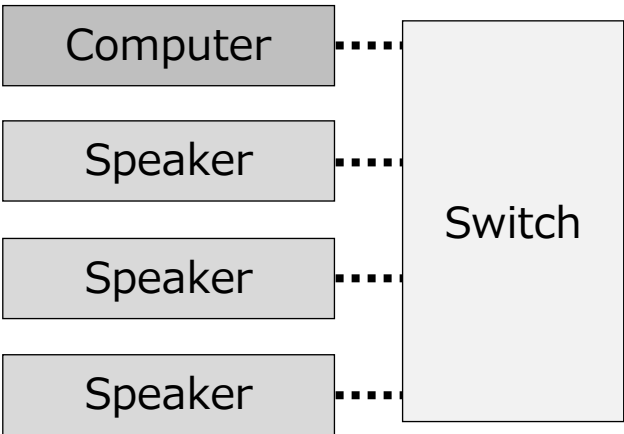
2. Select [Use the following IP address].
3. In the [IP address] box, enter [192.168.0.\*\*\*]  
(where "\*\*\*" is not the same value as for the DZR and unit ID).
4. In the [Subnet mask] box, enter [255.255.255.0], and then click [OK].

### Note

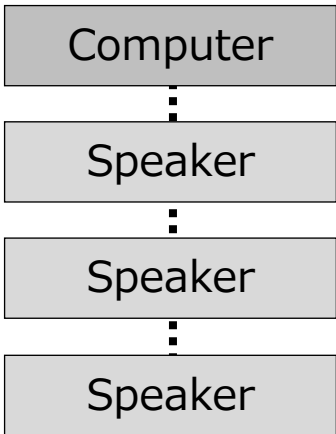
- The default speaker IP address setting is DHCP.
- When specifying settings, the "DZR Firmware Updater" may be blocked by Windows Firewall. Click [Windows Security] → [Firewall & network protection] → [Allow an app through firewall] → [Change settings], select the [Private] check box beside "DZR Firmware Updater", and then click [OK].

## Step 3. Updating the speaker firmware

1. Use Ethernet cables to connect the speakers and computer (via a switch in a star connection).



【Connection example 1 :  
Star connection】



【Connection example 2 :  
Daisy-chain connection】

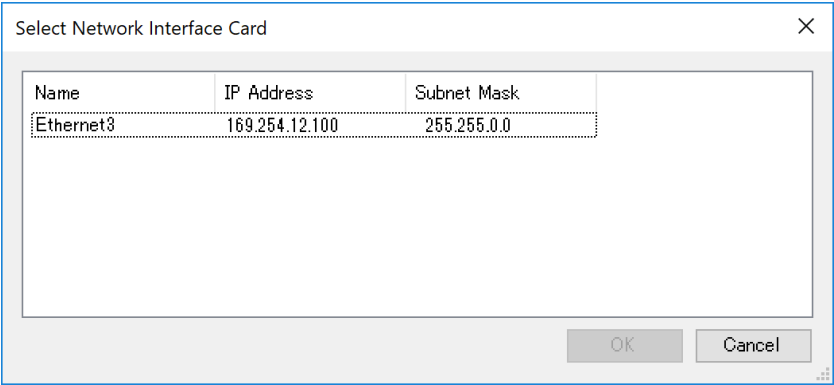
**Note**

If the computer enters standby, for example, in Power saver mode, data transfer to the device may stop.

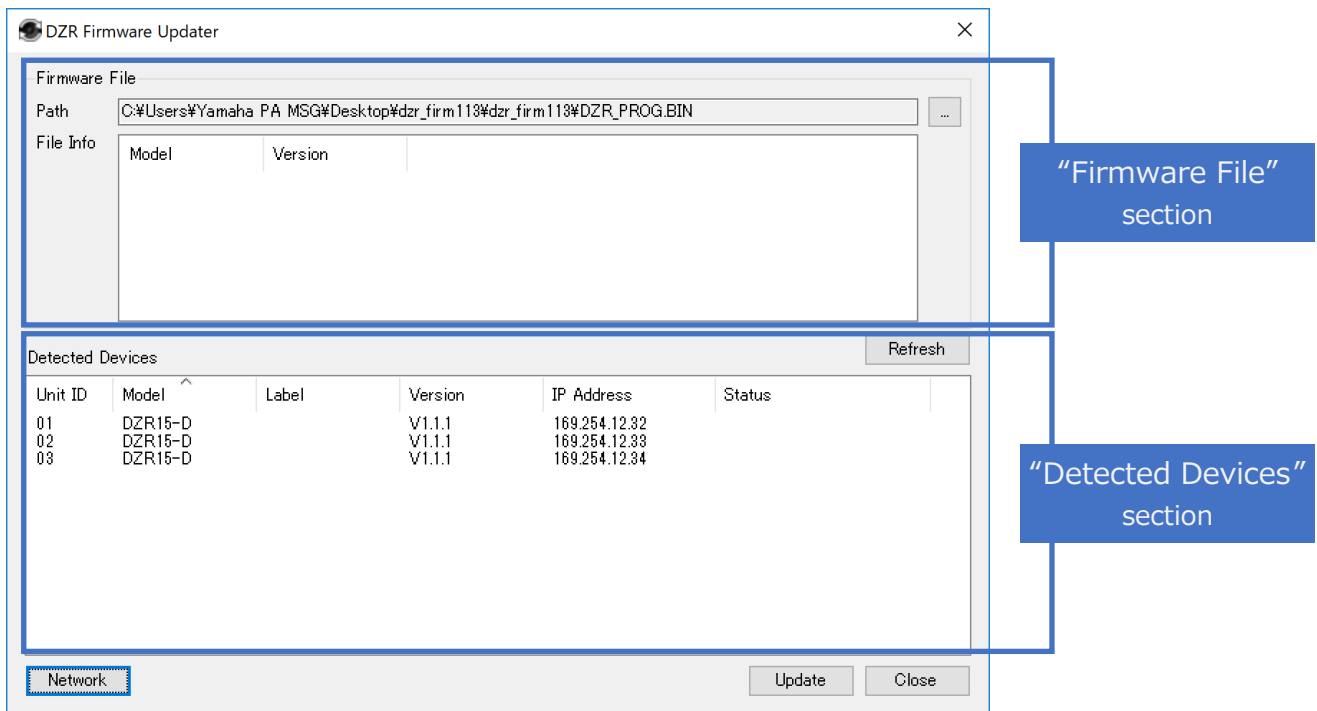
Set the computer in advance so that it does not enter standby. In addition, do not use a screen saver, etc.

From here, the descriptions show screen shots that appear as **【When speaker IP address setting is DHCP】**.

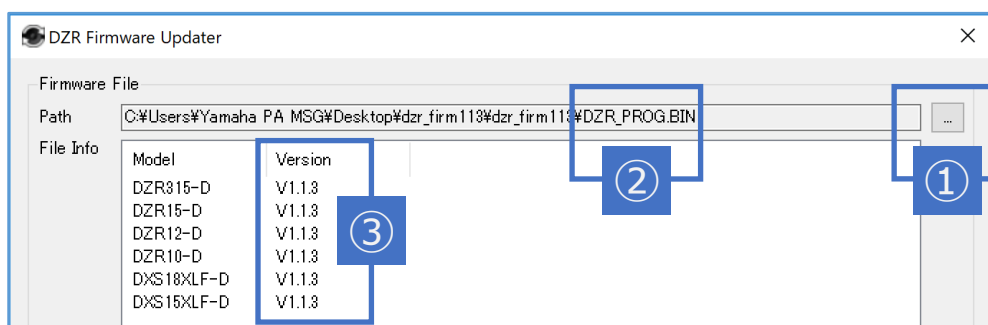
2. Start "DZR Firmware Updater".
- "Select Network Interface Card" dialog box appears, and the usable network cards are listed.



3. Select the network card whose TCP/IP setting was specified, and then click [OK].  
→ The main window appears.

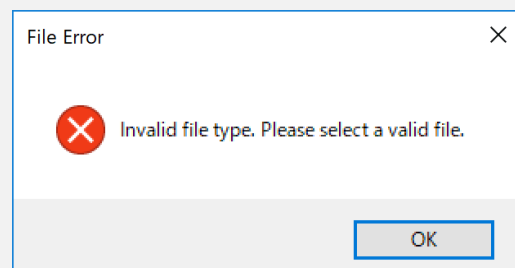


4. Click the select file button (① in the screen shot) in the "Firmware File" section, and then select [DZR\_PROG.BIN].  
→ The name of the selected firmware file appears at ② and the version at ③ in the screen shot.



### Note

If the correct firmware file has not been selected, an error message appears.



5. Check the speaker information displayed in the “Detected Devices” section.

Detected Devices						Refresh
Unit ID	Model	Label	Version	IP Address	Status	
01	DZR15-D		V1.1.1	169.254.12.32		
02	DZR15-D		V1.1.1	169.254.12.33		
03	DZR15-D		V1.1.1	169.254.12.34		

Menu	Description
Unit ID	The unit ID of the speaker.
Model	The model name of the speaker.
Label	The designation of the speaker.
Version	The firmware version of the speaker.
IP Address	The IP address of the speaker.
Status	The progress of the update.

**Note**

- When [Refresh] is clicked, the displayed information is cleared, and then the speakers are detected again. (If network settings have not been enabled, [Refresh] cannot be clicked.)
- If no speaker information is displayed, even though the TCP/IP setting is correctly specified, restart the speakers.

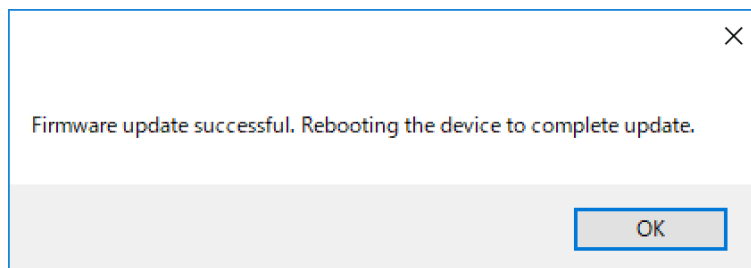
6. Click [Update].

→ The speakers are updated.

**Note**

- Under "Status", "Updating..." appears when the update is in progress, and "Completed" appears when updating is finished.
- If the speaker firmware version is the same as the firmware file version, "Skip" appears under "Status" and the update is skipped.
- If "Error" appears under "Status", the update has not been completed successfully. Check the connection status, and then perform the update again.

→ When the update is finished, completion information appears.



→ When the update is finished, the speakers will automatically restart.

After the restart, you can check the updated firmware version in the "Detected Devices" section.

This completes the firmware update.

Yamaha Pro Audio website  
<http://www.yamahaproaudio.com/>  
Yamaha downloads  
<https://download.yamaha.com/>